

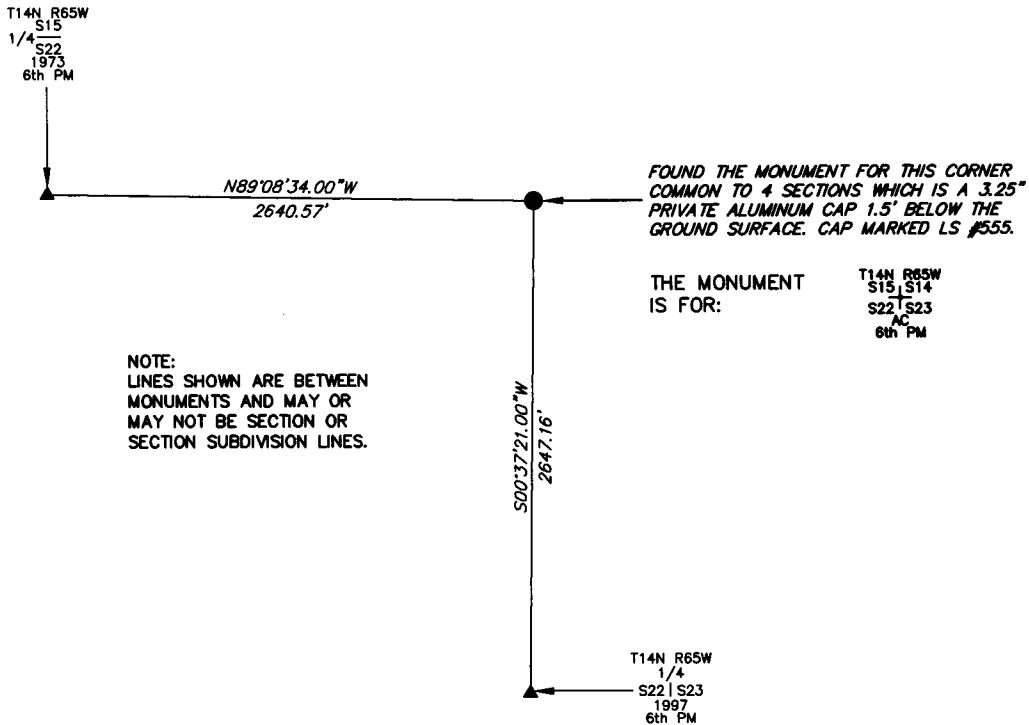
State of Wyoming Corner Record

CORNER PERPETUATION AND FILING ACT,

Regulations of the Board of Registration for Professional Engineers and Land Surveyors.)

Reverse side of this form may be used if more space is needed.

Record of original survey and citation of source of historic information (if corner is lost or obliterated). Description of corner monumentation evidence found and/or monument and accessories established to perpetuate the location of this corner. Sketch of relative location of monument, accessories, and reference points with course and distance to adjacent corner(s) (if determined in this survey). Method and rationale for reestablishment of lost or obliterated corner.

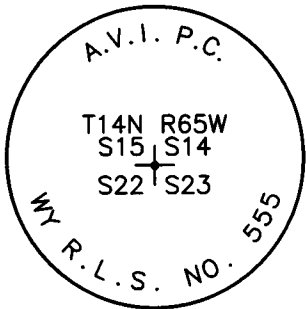


NOTE:
LINES SHOWN ARE BETWEEN
MONUMENTS AND MAY OR
MAY NOT BE SECTION OR
SECTION SUBDIVISION LINES.

FOUND THE MONUMENT FOR THIS CORNER
COMMON TO 4 SECTIONS WHICH IS A 3.25"
PRIVATE ALUMINUM CAP 1.5' BELOW THE
GROUND SURFACE. CAP MARKED LS #555.

THE MONUMENT
IS FOR: T14N R65W
S15 S14
S22 S23
AC
6th PM

T14N R65W
1/4
S22 S23
1997
6th PM



THE MONUMENT IS MARKED

CORNER MONUMENT SYMBOLS

- RECORD IS FOR THIS CORNER MONUMENT.
- ▲ A RELATED CORNER OR WC MONUMENT.

SCALE 1"=1000'
(EXCEPT IN TRIVIAL CASES)
BEARINGS ARE RELATED TO WGS 84 WITH GPS OBSERVATIONS
DRAWN BY: SM
P.C. B. LOWREY
COUNTY: LARAMIE

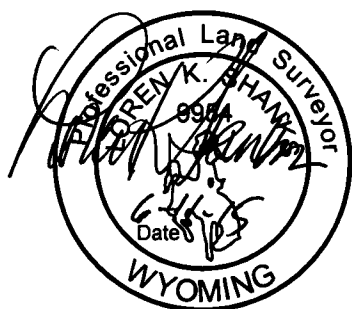
Date of Field Work: 09/07/2014 Office Reference: _____

CROSS INDEX DIAGRAM

A	1	2	3	4	5	6	7	8	9	10	11	12	13	14	15	16	17	18	19	20	21	22	23	24	25	A
B																										B
C	6				5					4																C
D																										D
E																										E
F																										F
G	7				8					9																G
H																										H
J																										J
K																										K
L	18				17					16																L
M																										M
N																										N
O																										O
P	19				20					21																P
Q																										Q
R																										R
S																										S
T	30				29					28																T
U																										U
V																										V
W																										W
X	31				32					33																X
Y																										Y
Z																										Z
	1	2	3	4	5	6	7	8	9	10	11	12	13	14	15	16	17	18	19	20	21	22	23	24	25	

Firm/Agency, Address
UELS, LLC
85 South 200 East
Vernal, Utah 84078
 Telephone Number: 435-789-1017

This corner record was prepared by me or under my direction and supervision.
SEAL & SIGNATURE



CORNER COMMON TO 4 SECTIONS
 Corner Name: NORTHEAST CORNER OF SECTION 22 Section: 22 T 14N R 65W ; 6TH P.M. Cross Index No.: N-17
 SBRPEPLS/PLSW: March 1994 (CLCR...SJA)